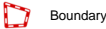
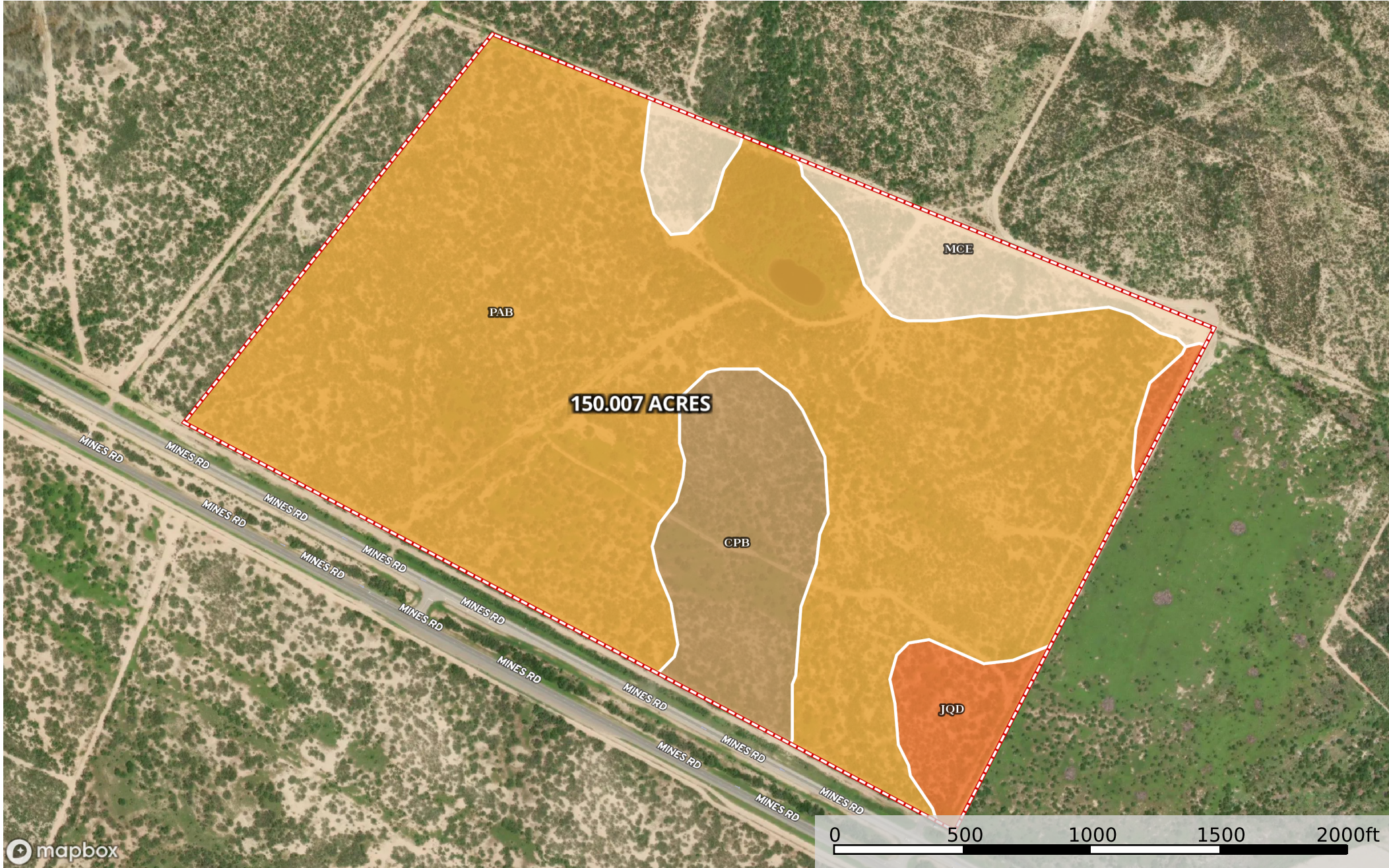


Needmore Ranch-TR 3-Subject Tract
Webb County, Texas, 150 AC +/-



Boundary



| Boundary 150.3 ac

SOIL CODE	SOIL DESCRIPTION	ACRES	%	CPI	NCCPI	CAP
PaB	Palafox clay loam, 0 to 3 percent slopes	115.89	77.1	0	28	6e
CpB	Copita fine sandy loam, 0 to 3 percent slopes	16.02	10.66	0	25	4e
MCE	Maverick-Catarina complex, gently rolling	11.47	7.63	0	13	6e
JQD	Jimenez-Quemado complex, undulating	6.92	4.6	0	10	7s
TOTALS		150.31(*)	100%	-	25.71	5.83









(*) Total acres may differ in the second decimal compared to the sum of each acreage soil. This is due to a round error because we only show the acres of each soil with two decimal.

Capability Legend

Increased Limitations and Hazards

Decreased Adaptability and Freedom of Choice Users

Land, Capability

								
	1	2	3	4	5	6	7	8
'Wild Life'	•	•	•	•	•	•	•	•
Forestry	•	•	•	•	•	•	•	
Limited	•	•	•	•	•	•	•	
Moderate	•	•	•	•	•	•		
Intense	•	•	•	•	•			
Limited	•	•	•	•				
Moderate	•	•	•					
Intense	•	•						
Very Intense	•							

Grazing Cultivation

(c) climatic limitations (e) susceptibility to erosion

(s) soil limitations within the rooting zone (w) excess of water